

# Our Volunteers

## BOARD OF DIRECTORS

**PRESIDENT:**  
Nikki Davis - Eastman Chemical Co.

**VICE-PRESIDENT:**  
Shalonda Adams - Pine Tree ISD

**TREASURER:**  
Jorge Acuna - Texas Bank and Trust

**PAST PRESIDENT:**  
Mark Robinson - AEP/SWEPCO

**CAMPAIGN CHAIR:**  
Dwayne Archer - City of Longview

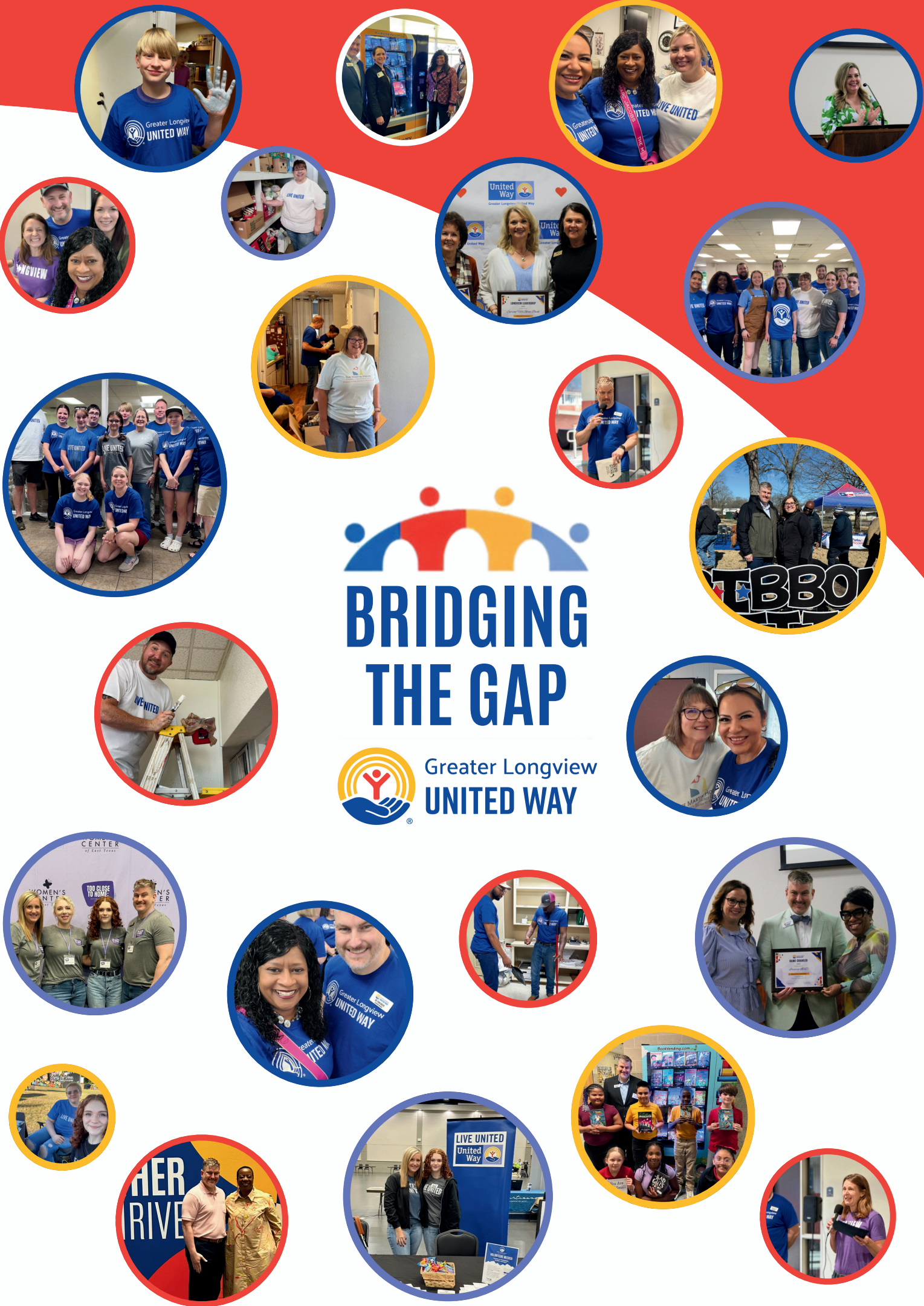
**CAMPAIGN CO-CHAIR:**  
Erika Rader - GAP



- MEMBERS**
- Jamey Brogan - CHRISTUS Good Shepherd Medical Center
  - Stephani Reeves - Longview Regional Medical Center
  - Andrew Coggins - Eastman Chemical Co.
  - Donald Daniels, Sr. - Community Member
  - Rodney Ellis - UT Tyler Longview
  - Shawn Hara - City of Longview
  - Al Harris - Gregg County Health Dept.
  - Christina Hollwarth - Hollwarth Law
  - Chad Jones - Wellness Pointe
  - Paula Loden - Spring Hill State Bank
  - Quannah Ludlow - AAON
  - Michael Purifoy - VeraBank
  - Mel Reynolds - Cadence Bank
  - Dana Rutland - StemCo
  - Julie Woods - Julie Woods and Associates

- COMMUNITY INVESTMENT COMMITTEE**
- Shawn Hara
  - Jen Eldridge
  - Scott Lewis
  - MaryAnn Hagenbucher
  - Mark Robinson

- SPECIAL EVENTS COMMITTEE**
- Mark Robinson
  - Paula Loden
  - Regina Mixon
  - Erika Rader



# 2024-2025 ANNUAL REPORT



# Letter From the Executive Director



Dear Friends and Partners,

As we reflect on our "Bridging the Gap" campaign for 2024-25, I am filled with gratitude for the remarkable collaboration that has defined this transformative year for Greater Longview United Way.

Our increased community engagement and expanded literacy programs have strengthened our ability to serve those who need us most. Through our continued advocacy for ALICE (Asset Limited, Income Constrained, and Employed) families and our unwavering commitment to education, health, and financial stability, we have made measurable progress in addressing the challenges facing our neighbors.

None of this would have been possible without the dedicated partnership of our corporate sponsors and individual donors. Your commitment to our shared mission has been the foundation of our success. Our community is stronger because of our investment.

I also extend heartfelt thanks to our exceptional staff and Board of Directors, whose leadership and vision continue to guide our organization forward.

As we look ahead to our new campaign, "United is the Way," I am excited about the opportunities to further expand our impact and strengthen the bonds that unite our community.

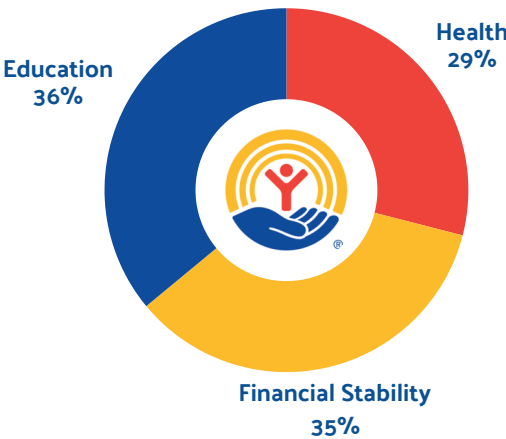
With sincere appreciation,



*Dr. Dolive*

REV. DR. EVAN M. DOLIVE  
EXECUTIVE DIRECTOR

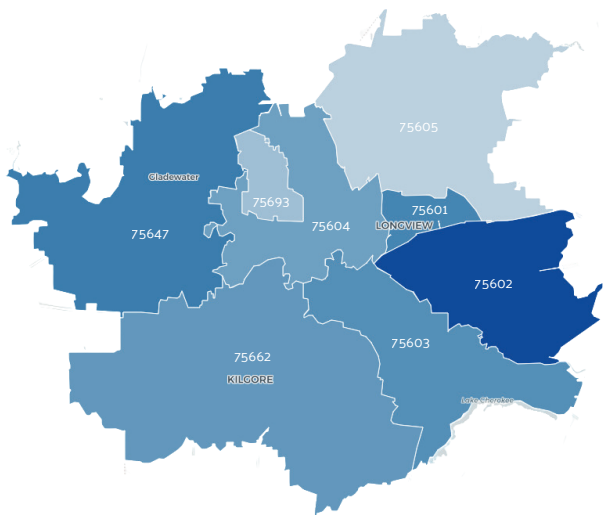
## WHERE WE ARE



### 2024 - 2025 BY THE NUMBERS



### STATE OF GREGG COUNTY



**44%**  
of households are below the ALICE threshold

> 30% are ALICE households  
> 14% are in poverty

\*Map is shaded to show the percentage of households that are below the ALICE threshold. The darker the blue, the higher the percentage

**2 in 5** of households are struggling to pay bills

Asset Limited  
Income Constrained  
Employed

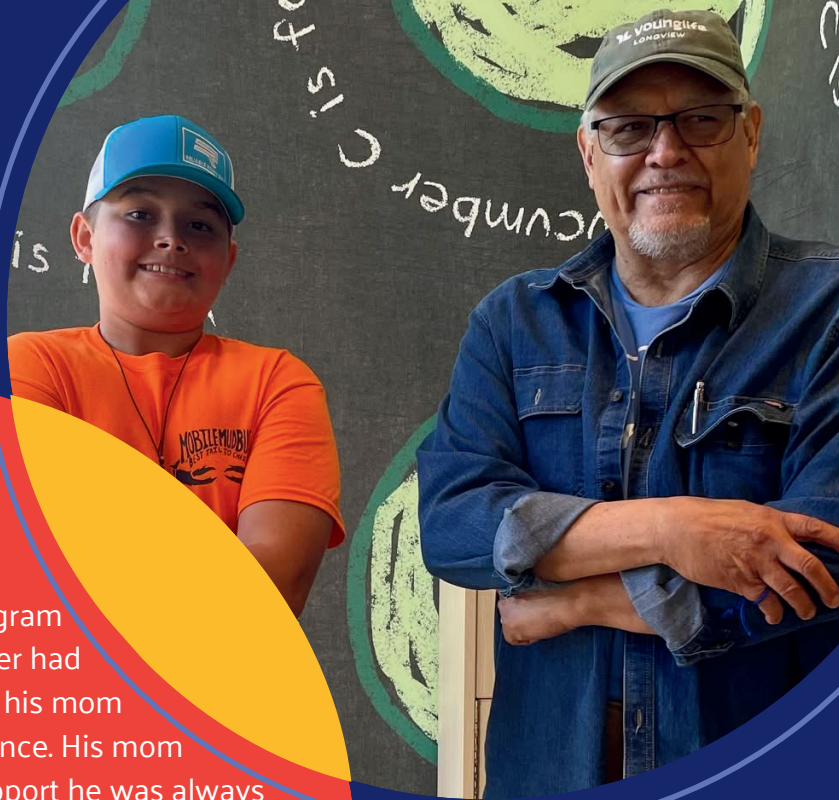


### WE'RE SEEING RESULTS



## HEART STORY

Referred to the Aspire Mentoring Program by The Martin House, 10-year-old Conner had already taken on the role of protector for his mom and siblings after years of domestic violence. His mom hoped a mentor would give him the support he was always giving to others. After months on the waitlist, Conner was matched with Carlos, and the connection was immediate. They discovered shared loves of music, cooking, and fishing, and Conner joked at their first meeting, "Well shoot! I'm ready to propose!" Since then, their friendship has grown into something deeply meaningful. From learning to smoke ribs to spending holidays together, Carlos has become a trusted mentor and friend not only to Conner but to his entire family, who lovingly call him "our Carlos." As his coordinator shared, "This is an incredibly strong match filled with love."



## PARTNER AGENCIES

AMERICAN RED CROSS SERVING EAST TEXAS  
BOYS & GIRLS CLUB OF THE BIG PINES  
COMMUNITY HEALTHCORE  
EAST TEXAS AREA COUNCIL, BOY SCOUTS  
EAST TEXAS CASA  
EAST TEXAS FOOD BANK  
EAST TEXAS LITERACY COUNCIL  
ETCADA  
FRIENDS OF PARTNERS IN PREVENTION  
GIRL SCOUTS OF NORTH EAST TEXAS  
LONGVIEW COMMUNITY MINISTRIES

LONGVIEW WOW  
THE MARTIN HOUSE CHILDREN'S ADVOCACY CENTER  
NORTHEAST TEXAS HABITAT FOR HUMANITY  
PARENTING RESOURCE CENTER OF EAST TEXAS  
PATHSTONES COUNSELING CENTER  
THE SALVATION ARMY  
SEESAW CHILDREN'S PLACE  
WOMEN'S CENTER OF EAST TEXAS